

FAMÍLIA

PARANENSE



TECHNICAL DATA SHEET

Governor of the State

Beto Richa

State Secretary of Family
and Social Development

Fernanda Richa

Coordination of the Technical Unit of the
Família Paranaense Program

Letícia Reis

Communication Coordination

Adriana Ribeiro

Photography

Rogério Machado

Aliocha Maurício

Arquivo/Seds

Graphic Design

Alexandre Ribeiro

www.desenvolvimentosocial.pr.gov.br

Palácio das Araucárias

Rua Jacy Loureiro de Campos, s/n Centro

Cívico - 80530-915 Curitiba - PR

Contact telephone number: 55 41 3210 2400

A WORD FROM THE SECRETARY

When we took over the Department of Family and Social Development, in 2011, we took on the commitment of working to reduce poverty in Parana. We knew that this goal was not a utopia, since we had in our professional background the experience of having reduced by 65% the poverty in Curitiba, capital of the State of Paraná.

Fortunately, we have obtained good results in this dream that moves us and makes us work more and more every day.

Researches of the Instituto de Pesquisa Econômica Aplicada (Institute of Applied Economic Research), the Ipea, show that we are on the right path. A survey of 2013 showed that Paraná was the state that most reduced hardship and the latest research of the institute, of 2014, appointed Paraná as leader in the fight against extreme poverty in the South and Southeast regions.

Figures like these fill us with satisfaction by giving us the certainty that we have been able to improve the quality of life of people who most need a helping hand from government agencies to overcome their difficulties.

The Familia Paranaense program, explained didactically in this booklet, is our main action in this quest. Since its launch, in 2012, we have assisted 253,000 families living in situations of vulnerability and social risk. We overcame our goals, but we want much more.

This means more food on the table, a child in the classroom, required medical treatment to cure some disease, housing, conditions to live off agriculture, a job vacancy, financial emancipation and many other actions that make life easier, worthy and better.

We dream of a Paraná without hardship, where people can sustain themselves, without relying on government aid. We believe that this can happen and we are working towards achieving this.

**Fernanda Richa, Secretary of
State of Family and Social Development**



The Program is in

399

cities in the State

Assisting

**253,8 k
families**


with customized plans
and the benefit of a
supplementary income
transfer.

(since 2012)

US\$ 36.8*
million

invested in the transfer of
income and in actions undertaken
by municipalities.

**NEW LIFE
BEGINS HERE**

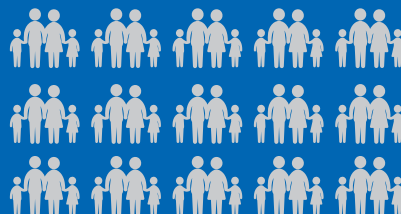
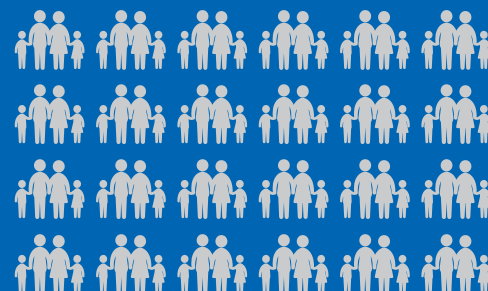


The Família Paranaense program is the main program of the Government of Paraná to reduce poverty in the State. Created in 2012, it brings together actions of 19 departments and state enterprises - in addition to the municipalities, which are important partners.

It is coordinated by the Secretary of State of Family and Social Development, responsible for the policies of social assistance and guarantee of rights.

Since the launch of the Família Paranaense program, Paraná has taken a major step to promote the development and emancipation of families living in situations of vulnerability and social risk. They are the ones that mostly need assistance from public authorities to overcome their difficulties.

**US\$ 30
million***
transferred to



**235,000
families**

(since 2012)





HOW IT WORKS

The families included in the Família Paranaense program receive customized assistance for a period of two years.

The assistance plan takes into account the needs of each family and the peculiarities of the region in which they live.

During this period, they are assisted by an integrated protection network, particularly in the areas of social welfare, health, education, housing, agriculture and labor.

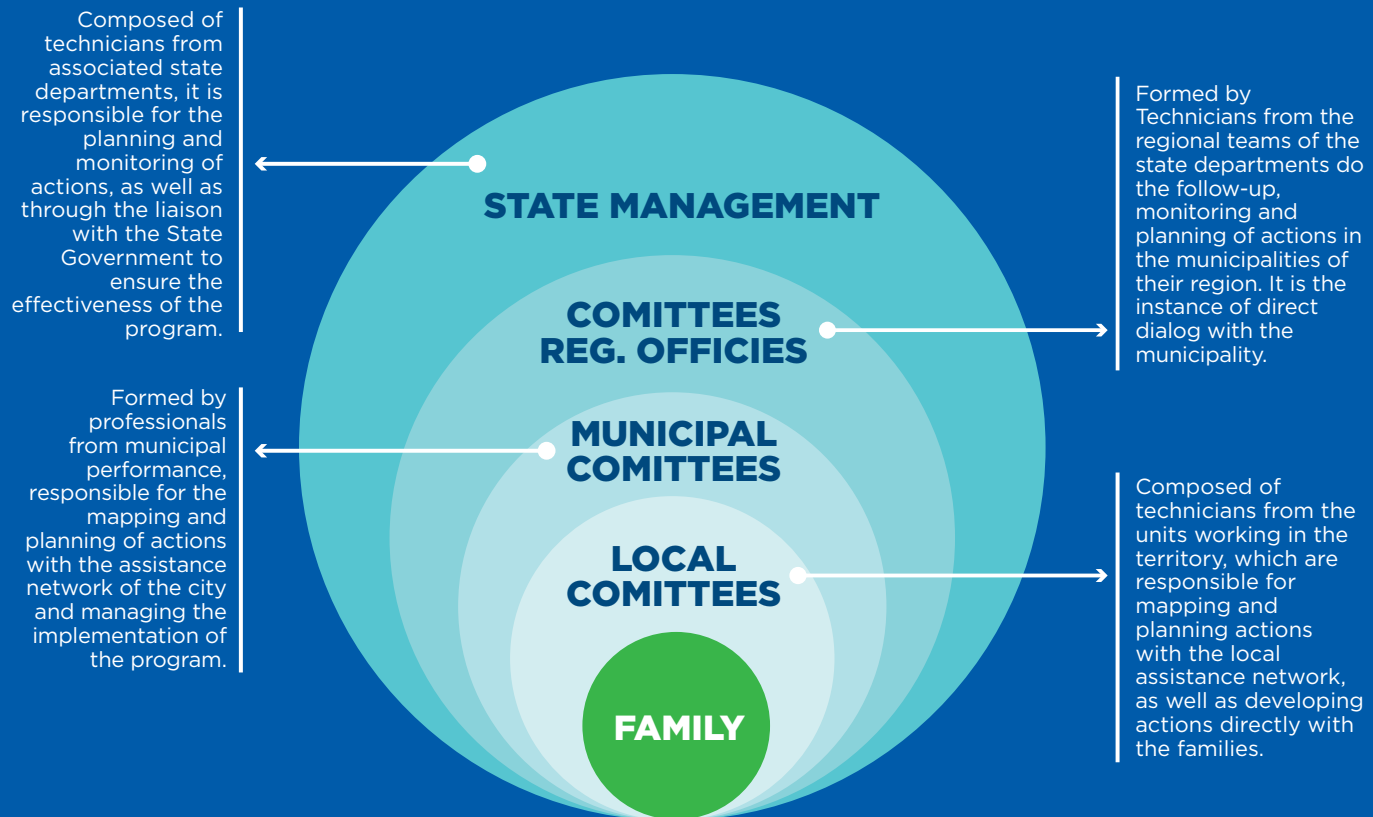
The Família Paranaense program has a specific model of family monitoring. Each family is monitored by a technician, which identifies their potential and existing resources, and then defines the plan that will help them promote independent development.



MANAGEMENT MODEL

To achieve its objective, the Família Paranaense program was developed across sectors, interlinking networks by means of deploying Management Committees (local, municipal, regional and at state level) at various levels. Each committee

is composed of managers and/or technicians who work in the State Government and in the Municipal Governments. These networks are strategic in the development of the program to provide responses to situations of social vulnerability experienced by the families.



MODALITIES

The Família Paranaense program has four modalities:

- 1 Priority Municipalities;
- 2 Spontaneous Adherence;
- 3 Attention to the Families of Teenagers admitted through a Social and Educational Measure (Afai);
- 4 Renda Família Paranaense. (Paraná Family Income).



The Família Paranaense program **exceeded the goal of 100,000 families** in the first three years of implementation. At the end of 2014, **165,000 families** had already received the benefit.





156 municipalities are considered a priority by the Família Paranaense, due to the low rates of development. The municipal administrations monitor the families following the methodology of the program.

The selection of the municipalities takes into account the value of the Índice Iparades de Desempenho Municipal (IPDM - Iparades index of Municipal Performance, the percentage of extreme poverty and the Index of Vulnerability of the Families of Paraná.

In the modality of **Spontaneous Adherence** are the municipalities that, regardless of their social indicators, adhere to the program and provide the individual follow-up to the families.

The municipalities included in the modality **Attention to Families of Teenagers Admitted through a Social and Educational Measure (Afai)** provide the systematic monitoring of families, during the admitted period and, later, during one year after they go back home.

All municipalities, even those who do not adhere to the program, are included in the modality Renda Família Paranaense (Paraná Family Income). Created in December 2013, the benefit transfers the income directly to the families living in situations of social vulnerability.



The goal for 2018, which was to provide assistance to 200,000 families, has also **been exceeded with the assistance, this year, to 235,000 families.**

SUPPORT TO

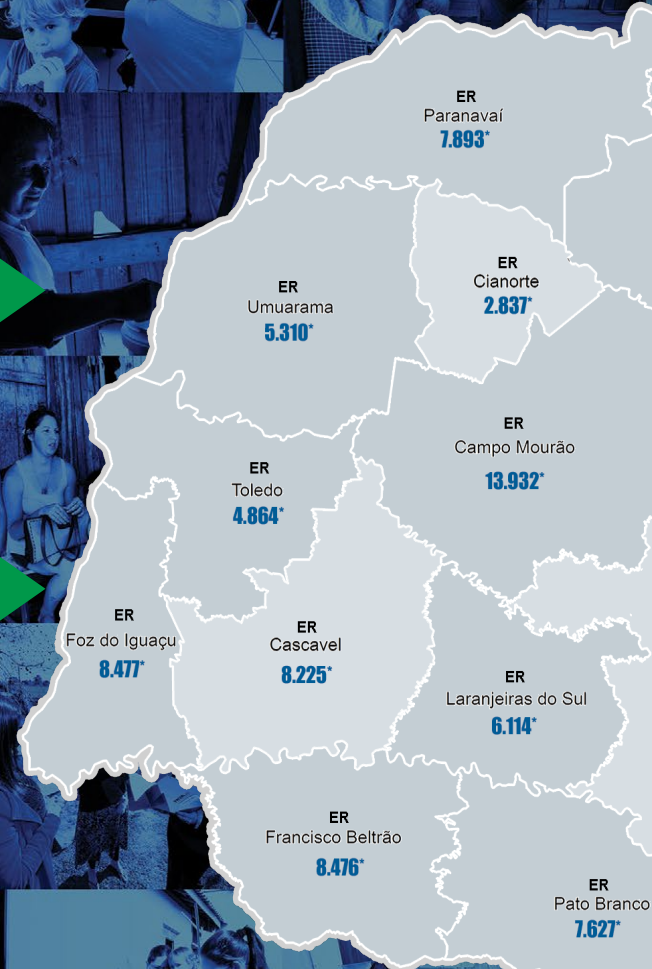
FAMÍLIA PARANAENSE INSENTIVE

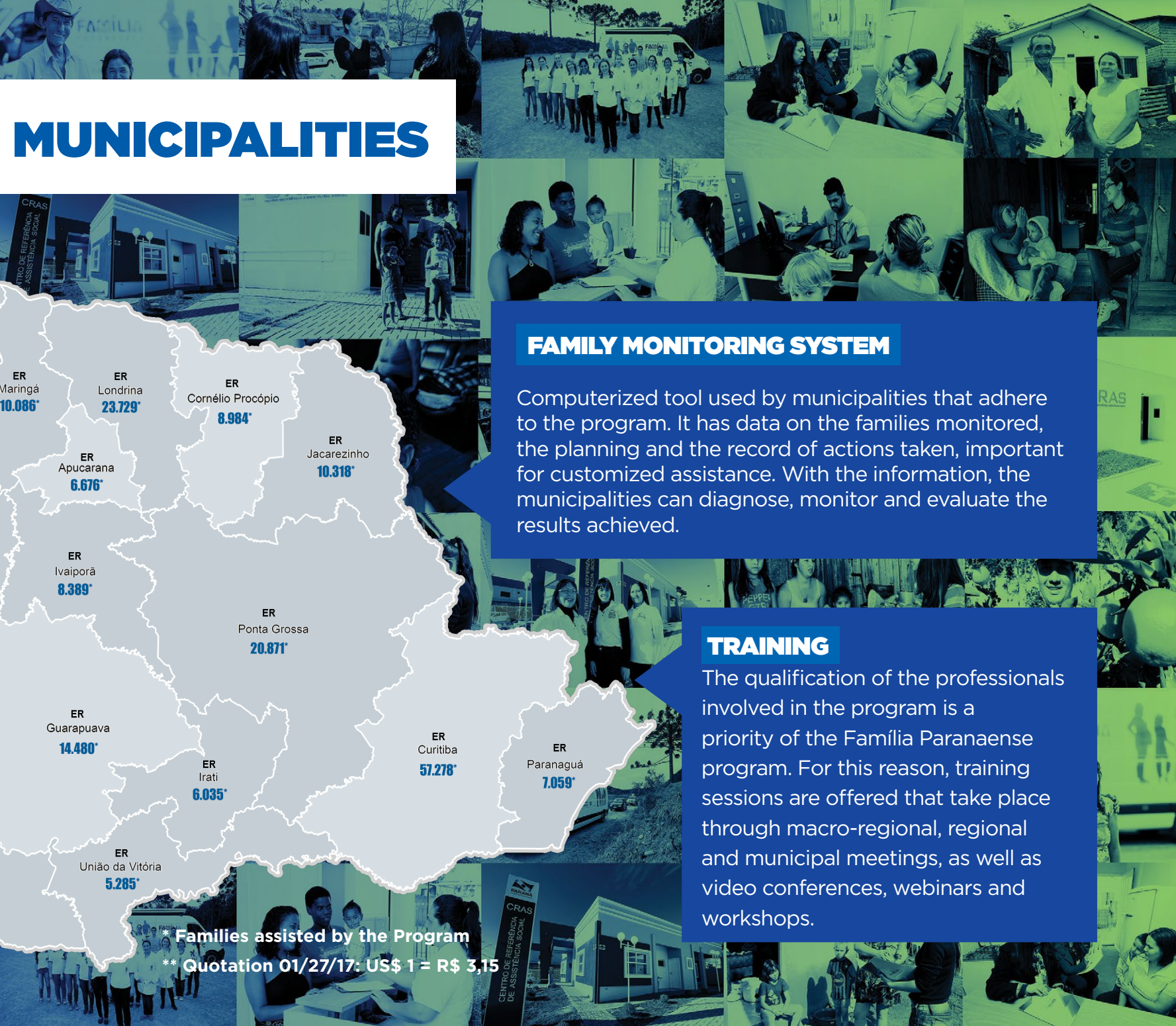
Transfers the resources so that the municipalities can invest in the policy of social assistance and, therefore, strengthen the monitoring of families included in the program. Since 2014, the 156 municipalities considered as priority received US\$ 4.7 million**.

The transfer of resources occurs through the modality Fund to Fund, which does not require any agreement and gives autonomy to use the money.

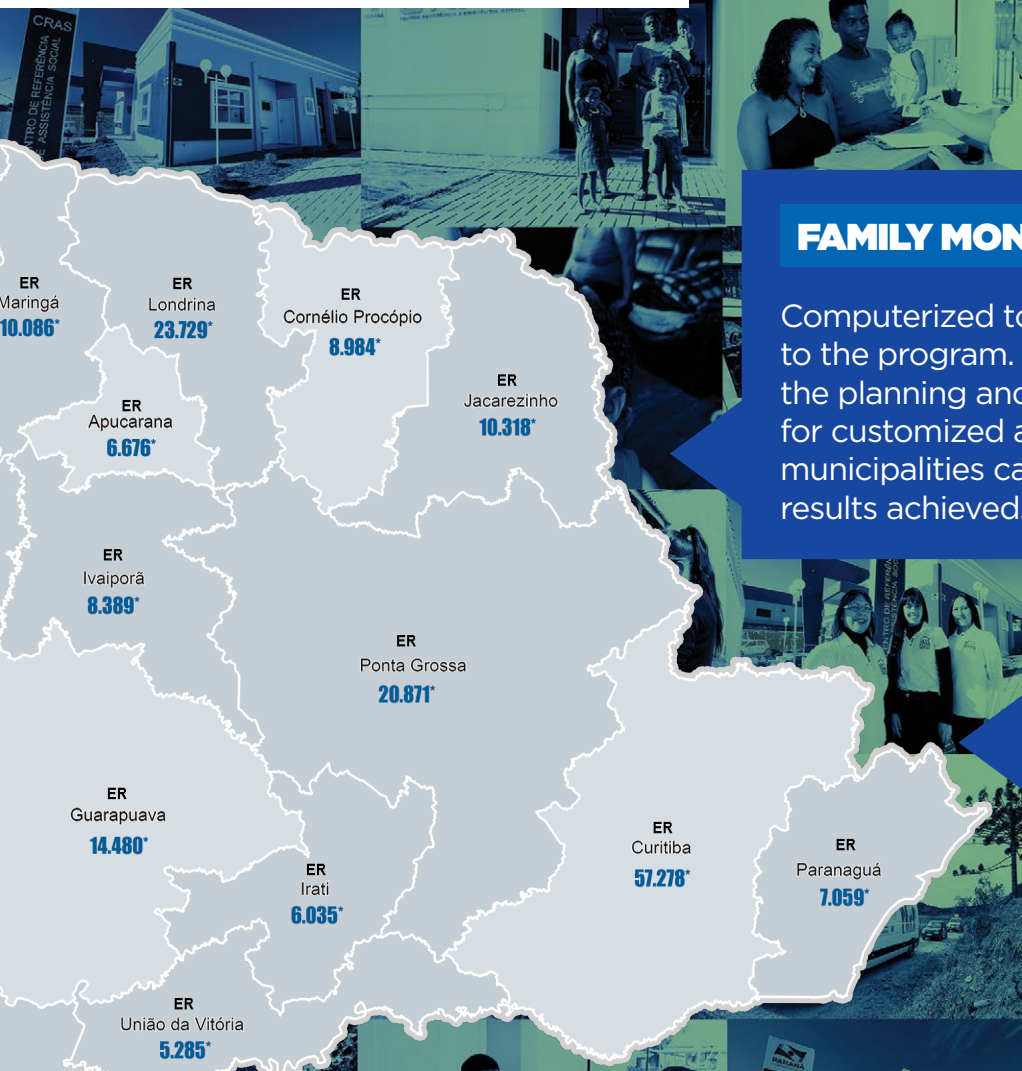
LINES OF CREDIT

This is the Paraná Juro Zero (Zero Interest), that offers interest-free financing to families who want to set up their own business or expand the one they already have. The families take out a loan between US\$ 95** to US\$1,270**, which can be paid in 10 or 20 installments. The money is used in the purchase of machinery, equipment and tools, and in refurbishing or expanding the installations or even as working capital.





MUNICIPALITIES



FAMILY MONITORING SYSTEM

Computerized tool used by municipalities that adhere to the program. It has data on the families monitored, the planning and the record of actions taken, important for customized assistance. With the information, the municipalities can diagnose, monitor and evaluate the results achieved.

TRAINING

The qualification of the professionals involved in the program is a priority of the Família Paranaense program. For this reason, training sessions are offered that take place through macro-regional, regional and municipal meetings, as well as video conferences, webinars and workshops.

* Families assisted by the Program

** Quotation 01/27/17: US\$ 1 = R\$ 3,15



IDENTIFICATION OF FAMILIES





The Index of Vulnerabilities of the Families (IVFPR) was created to identify and guide the selection of families that are included in the Família Paranaense program, which makes it an important tool to support the municipalities.

The result of a partnership of the State Department of Family and Social Development with Instituto Paranaense de Desenvolvimento Econômico e Social (Paraná Institute for Economic and Social Development (Ipardes), the IVFPR has its data generated from the Cadastro Único dos Programas Sociais (CadÚnico - Single Registry of Social Programs).

CALCULATION OF THE IVFPR CONSIDERS 19 COMPONENTS, DIVIDED INTO THE DIMENSIONS:



Adequacy of the household;



Profile and household composition;




Access to employment and income;



Condition of schooling.



**INCOME FOR
FARMERS**



A new action of the Família Paranaense program is changing the reality of families of low income living in the rural area. It is the Renda Agricultor Familiar (Farming Family Income), the benefit created in December 2015, which transfers a fixed value to families to be invested in income generation and to improve their quality of life.

It is intended for families living in situations of social vulnerability, living in a rural area, which live off agriculture and have an income per capita of up to US\$54* per month. Those who meet the requirements will receive a one-off aid payment of US\$ 635* or US\$ 952,3* (one value or the other), depending on the family income.

The resources can be used in projects designated for the improvement of the quality of water and sanitation, food production for self- consumption and for the generation of income. The families can choose how they wish to invest the money.

Emater technicians devise the project with the family, provide guidance and monitor the implementation.



The goal is to reach
5,600 families
throughout the
State by 2019.

* Quotation 01/27/17: US\$ 1 = R\$ 3,15

PARTNERSHIP WITH THE BID

The State Government signed a contract, in August 2014, with the Inter-American Development Bank (IDB) to implement the Integrated Program of Social Inclusion and Urban Requalification, which is part of the Família Paranaense program. The program has a funding of US\$ 100 million, where by 60% are the bank's resources and 40% are from the state government.



The Integrated Program provides assistance to **22,000 families of the 156 municipalities** considered as priority. The actions are in the areas of social **assistance, work, health, education, housing and agriculture.**



A photograph of a woman with dark hair hugging a young girl from behind. They are standing in front of a white refrigerator. The girl is wearing a pink and white striped shirt. The background shows a doorway and a wooden fence.

A PROGRAM OF REFERENCE

For the IDB, the Família Paranaense program can become a reference for Latin America and the Caribbean. According to the consultant who coordinates the missions of the IDB with the Government of Paraná, Francisco Ochoa, the methodology used by the program is pioneer and capable of improving the quality of life for future generations.

Since 2014, Ochoa comes to Curitiba regularly to monitor the progress of the Integrated Program of Social Inclusion and Urban Requalification - Família Paranaense (the Paraná Family).



In Curitiba, the program that gave rise to the Família Paranaense program has **reduced poverty by 65%**



CRAS

CENTRO DE REFERÊNCIA
DE ASSISTÊNCIA SOCIAL

**ACTIONS OF THE FAMÍLIA
PARANAENSE PROGRAM**





SOCIAL ASSISTANCE

Construction of 22 Reference Centers for Social Assistance (Cras) and eight Reference Centers Specialized in Social Assistance (Creas). Aid transfers for actions of Basic and Special Social Protection, Management of the Unified Social Care System, eventual benefits, transfer of income to the families, granting a discount on electricity rates (Luz Fraterna program), reforms and expansions of the Cras units and the hiring of mobile teams.



HOUSING

Landholding Regularization in ten municipalities that have the highest rates of housing vulnerability. The action provides for the regularization of areas with urban infrastructure, the registration of real estate, and for the refurbishment and construction of new homes.



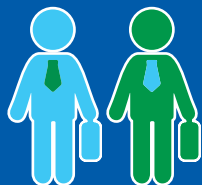
HEALTH

Actions in the health units, to ensure the follow-up of pregnant women and people with chronic diseases (diabetes and hypertension) and vaccination of children up to one year of age.



EDUCATION

Actions to ensure the extension of the school day, by providing extracurricular activities/ after school activities, youth and adult education and combating school drop-out.



WORK

Provision of courses of professional qualification and incentives for new enterprises.



AGRICULTURE

Deployment of the Renda Familiar Paranaense Agricultor Familiar (Paraná Farmer Family Income) - benefit for families living in the rural area.



FAMILIES IMPROVE THEIR QUALITY OF LIFE

The Família Paranaense program has guaranteed great results in the promotion and improvement of living conditions of families of Paraná with the highest level of social vulnerability.

33%

have improved their quality of life, compared with those who did not participate in the program.

65%

have improved their homes

60%

have progressed in terms of their level of schooling*

* It takes into account the increase in the number of children and teenagers who have resumed their studies and young people and adults who have completed primary education.

The development of the Família Paranaense program has contributed to the reduction of extreme poverty in the State.

According to the latest survey from the Institute of Applied Economic Research (Ipea), from 2009 to 2014 Paraná was the leader in the reduction of extreme poverty in the South and Southeast regions of the country. In this period, 214,600 people left behind extreme poverty, which shows a reduction of 57.4%.

PARANÁ IS LEADER IN THE REDUCTION OF EXTREME POVERTY

NEW LIFE

The couple Maria Senhora de Jesus dos Santos and Gersino Rodrigo dos Santos is one of the families that improved their homes.



NEW LIFE BEGINS HERE.